

KEY:
 — NEW WHITE ROAD MARKINGS FOR DETAILS REFER TO DRAWING UA007133-PR-1200-01.
 — NEW YELLOW ROAD MARKINGS FOR DETAILS REFER TO DRAWING UA007133-PR-1200-01.

- NOTES**
1. FOR SURVEY LEGEND REFER TO DRG UA007133-PR-0000-01.
 2. THE CONTRACTOR IS TO MAINTAIN ACCESS TO ALL PROPERTIES AND BUSINESSES AT ALL TIMES.
 3. BEWARE OF UNDERGROUND SERVICES. THE CONTRACTOR SHALL ENSURE THAT ALL UTILITIES' APPARATUS IS PROPERLY LOCATED AND CLEARLY MARKED ON SITE.

FOR CONTINUATION SEE DRG UA007133-PR-1100-02

0	INITIAL ISSUE	04/03/15
Issue	Description	Date
Status	PRELIMINARY DESIGN	
Scales	1:200 @ A1	Current Issue Signatures
Original Size	A1	Author R.Wardhan
Datum		Checker C.Govern
Grid		Approver K.Castle
		© Copyright reserved



Hyder Consulting
 Hyder Consulting (UK) Limited
 Manning House
 22 Carlisle Place
 London
 SW1P 1JA
 Tel: +44 (0) 203 014 9000
 Fax: +44 (0) 207 628 8428

Project:

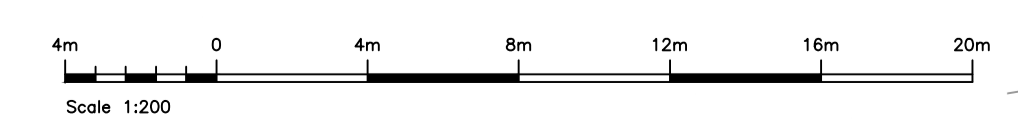
**BALLARDS ROAD /
 NEW ROAD
 PUBLIC REALM IMPROVEMENTS**

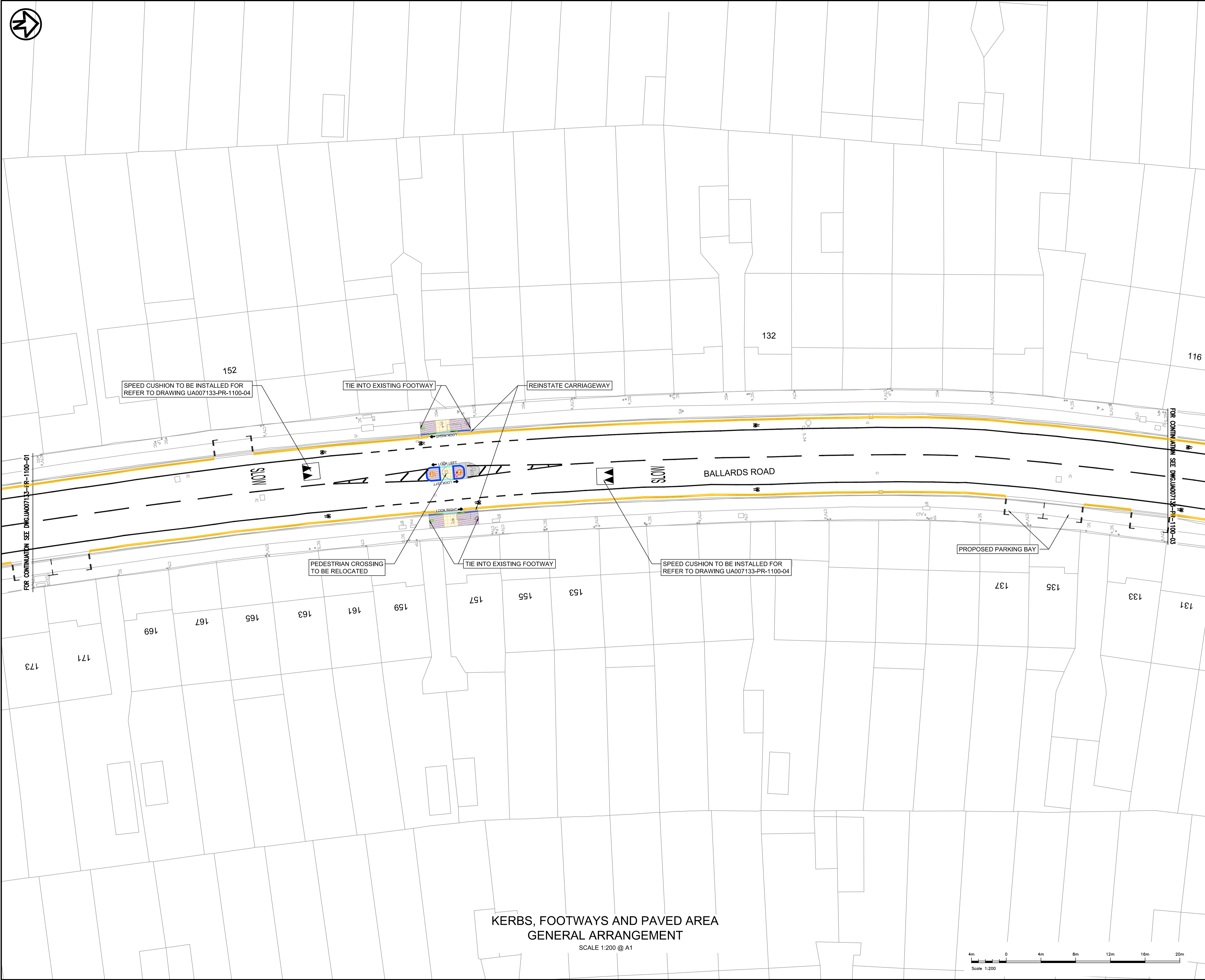
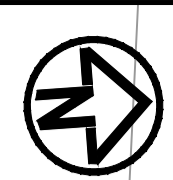
Title:

**KERBS, FOOTWAYS AND
 PAVED AREAS -
 GENERAL ARRANGEMENT**

Drawing No.	Rev
UA007133-PR-1100-01	0

**KERBS, FOOTWAYS AND PAVED AREA
 GENERAL ARRANGEMENT**
 SCALE 1:200 @ A1





- KEY:**
- FOOTWAY RECONSTRUCTION (NEW ASPHALT) . FOR DETAILS REFER TO DRAWING UA007133-PR-1100-06 SECTION B-B.
 - NEW 400x400x65mm (BUFF) BLISTER PAVING SLABS. FOR DETAILS REFER TO DRAWING UA007133-PR-1100-06 SECTION C-C.
 - EXTENT OF PAVEMENT CARRIAGEWAY WORKS - FOR DETAILS REFER TO UA007133-PR-0700-05.
 - NEW GRANITE KERBS LAID FLUSH.
 - NEW GRANITE KERBS 150x300mm, (125mm UPSTAND.
 - NEW GRANITE TRANSITION KERBS 150x300mm.
 - NEW WHITE ROAD MARKINGS FOR DETAILS REFER TO DRAWING UA007133-PR-1200-02.
 - NEW YELLOW ROAD MARKINGS FOR DETAILS REFER TO DRAWING UA007133-PR-1200-02.
 - REINSTATE EXISTING TIMBER BOLLARD.
 - PROPOSED TIMBER BOLLARD.
 - PROPOSED REFUGE ISLAND BEACON.
 - NEW NON ILLUMINATED IGP.FOR DETAILS REFER TO DRAWING UA007133-PR-1100-05.

- NOTES**
1. FOR SURVEY LEGEND REFER TO DRG UA007133-PR-0000-01.
 2. THE CONTRACTOR IS TO MAINTAIN ACCESS TO ALL PROPERTIES AND BUSINESSES AT ALL TIMES.
 3. BEWARE OF UNDERGROUND SERVICES. THE CONTRACTOR SHALL ENSURE THAT ALL UTILITIES' APPARATUS IS PROPERLY LOCATED AND CLEARLY MARKED ON SITE.

0	INITIAL ISSUE	04/03/15
Issue	Description	Date
PRELIMINARY DESIGN		
Scale	1:200@A1	Current Issue Signatures
Original Size	A1	Author R.Wardhan
Datum		Checker C.Govern
Grid		Approver K.Castle
© Copyright reserved		



Hyder Consulting (UK) Limited
 Manning House
 22 Carlisle Place
 London
 SW1P 1JA
 Tel: +44 (0) 203 014 9000
 Fax: +44 (0) 207 628 8428

Project

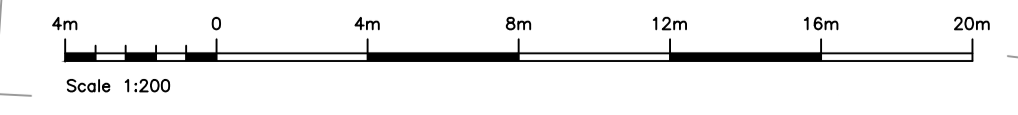
**BALLARDS ROAD /
NEW ROAD
PUBLIC REALM IMPROVEMENTS**

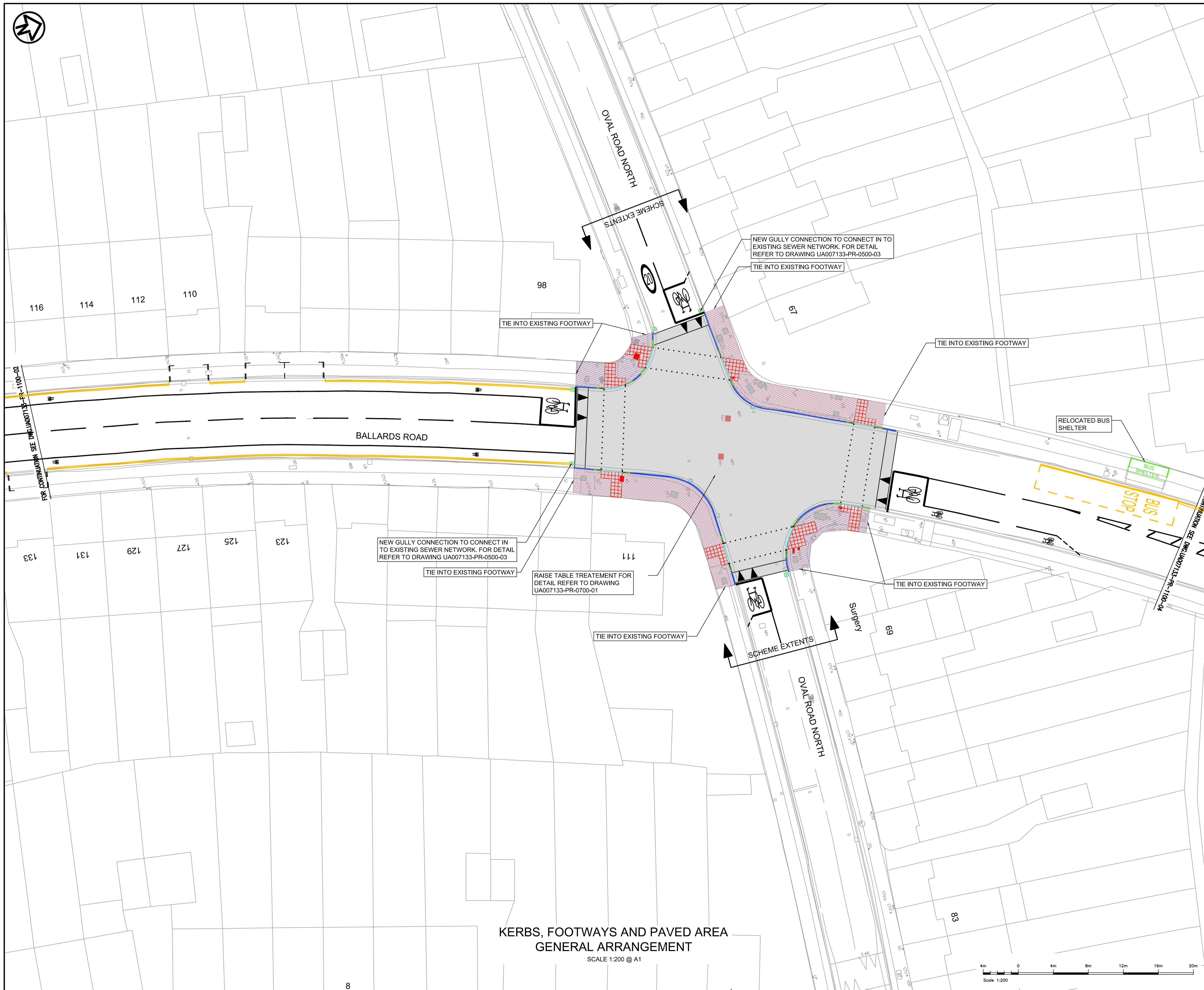
Title

**KERBS, FOOTWAYS AND
PAVED AREAS -
GENERAL ARRANGEMENT**

Drawing No. UA007133-PR-1100-02	Rev 0
------------------------------------	----------

**KERBS, FOOTWAYS AND PAVED AREA
GENERAL ARRANGEMENT**
SCALE 1:200 @ A1





- KEY:**
- FOOTWAY RECONSTRUCTION (NEW ASPHALT) FOR DETAILS REFER TO DRAWING UA007133-PR-1100-06 SECTION B-B.
 - EXTENT OF PAVEMENT CARRIAGEWAY WORKS - FOR DETAILS REFER TO UA007133-PR-0700-05 AND UA007133-PR-0700-06.
 - NEW 400x400x65mm (RED) BLISTER PAVING SLABS. FOR DETAILS REFER TO DRAWING UA007133-PR-1100-06 SECTION C-C.
 - NEW GRANITE KERBS LAID FLUSH (6mm UPSTAND) .
 - NEW GRANITE KERBS 150x300mm (50mm UPSTAND) .
 - NEW GRANITE TRANSITION KERBS 150x300mm.
 - NEW WHITE ROAD MARKINGS FOR DETAILS REFER TO DRAWING UA007133-PR-1200-03.
 - NEW YELLOW ROAD MARKINGS FOR DETAILS REFER TO DRAWING UA007133-PR-1200-03.
 - PROPOSED BUS STOP SHELTER LOCATION.
 - NEW RECESSED UTILITY COVERS REFER TO UA007133-PR-1100-05.
 - EXISTING UTILITY COVER IN FOOTWAY ADJUSTED TO SUIT PROPOSED LEVELS.
 - NEW GULLY FRAME FOR DETAILS REFER TO UA007133-PR-0500-03.
 - NEW GULLY FRAME AND CATCHPIT - FOR DETAILS REFER TO UA007133-PR-0500-03.
 - EXISTING UTILITY COVER IN CARRIAGEWAY TO SUIT PROPOSED LEVELS.
 - REINSTATE EXISTING BOLLARD.

- NOTES**
1. FOR SURVEY LEGEND REFER TO DRG UA007133-PR-0000-01.
 2. THE CONTRACTOR IS TO MAINTAIN ACCESS TO ALL PROPERTIES AND BUSINESSES AT ALL TIMES.
 3. BEWARE OF UNDERGROUND SERVICES. THE CONTRACTOR SHALL ENSURE THAT ALL UTILITIES' APPARATUS IS PROPERLY LOCATED AND CLEARLY MARKED ON SITE.

0	INITIAL ISSUE	04/03/15
Issue	Description	Date
Status		
PRELIMINARY DESIGN		
Scales		Current Issue Signatures
1:200 @ A1		Author R.Wardhan
Original Size		Checker C.Govern
Datum		Approver K.Castle
Grid		© Copyright reserved



Hyder Consulting (UK) Limited
 Manning House
 22 Carlisle Place
 London
 SW1P 1JA
 Tel: +44 (0) 203 014 9000
 Fax: +44 (0) 207 628 8428

Project

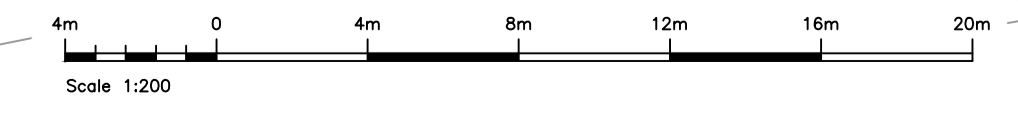
**BALLARDS ROAD /
NEW ROAD
PUBLIC REALM IMPROVEMENTS**

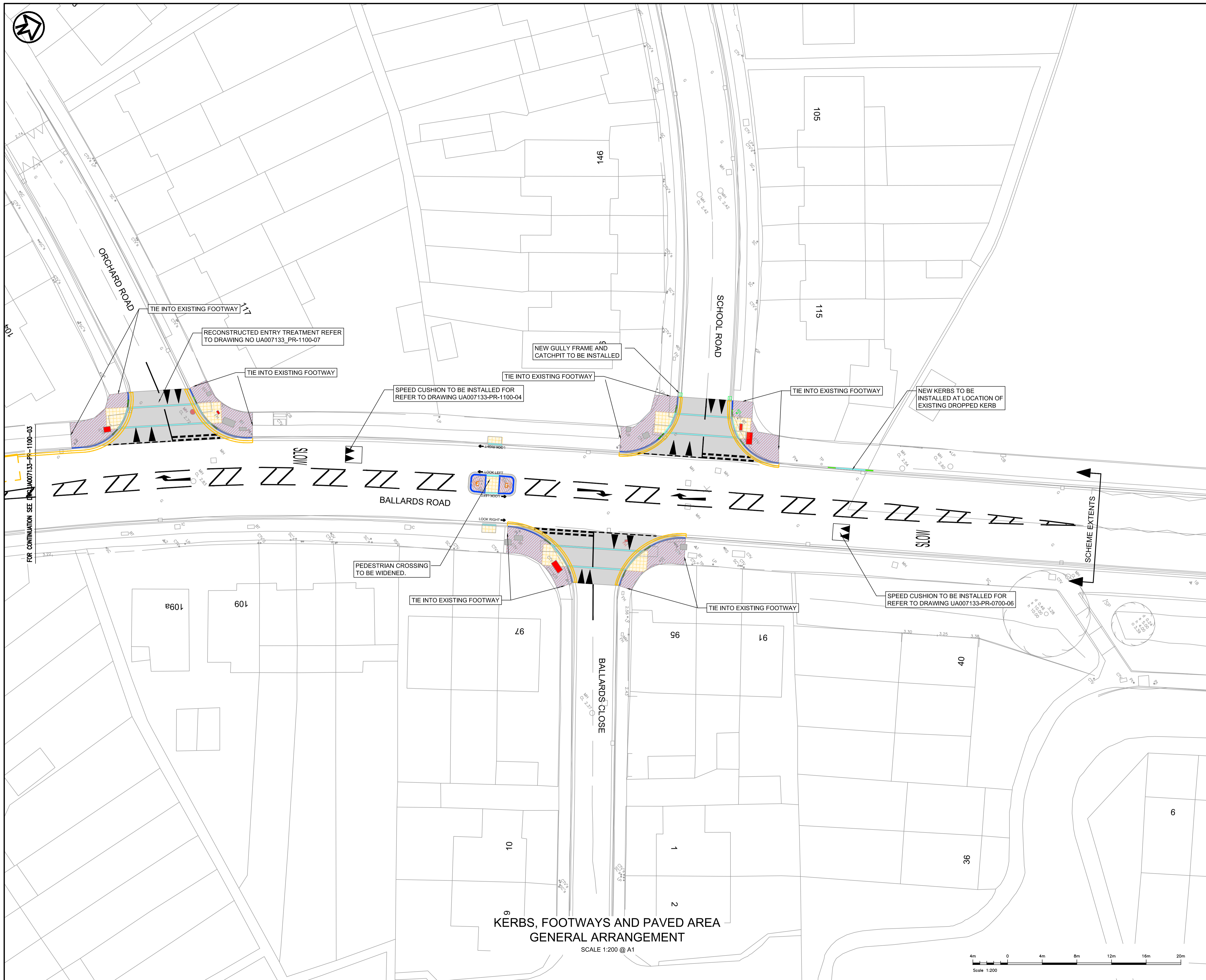
Title

**KERBS, FOOTWAYS AND
PAVED AREAS -
GENERAL ARRANGEMENT**

Drawing No. UA007133-PR-1100-03	Rev 0
------------------------------------	----------

**KERBS, FOOTWAYS AND PAVED AREA
GENERAL ARRANGEMENT**
SCALE 1:200 @ A1





- KEY:**
- FOOTWAY RECONSTRUCTION (NEW ASPHALT). FOR DETAILS REFER TO DRAWING UA007133-PR-1100-06 SECTION B-B.
 - ENTRY TREATMENT WORKS - FOR DETAILS REFER TO UA007133-PR-0700-05 AND UA007133-PR-1100-07.
 - NEW 400x400x65mm (BUFF) BLISTER PAVING SLABS. FOR DETAILS REFER TO DRAWING UA007133-PR-1100-06 SECTION C-C.
 - NEW WHITE ROAD MARKINGS FOR DETAILS REFER TO DRAWING UA007133-PR-1200-04.
 - NEW YELLOW ROAD MARKINGS FOR DETAILS REFER TO DRAWING UA007133-PR-1200-04.
 - NEW GRANITE KERBS LAID FLUSH.
 - NEW GRANITE FULL HEIGHT KERBS 150x300mm, 125mm UPSTAND.
 - NEW GRANITE TRANSITION KERBS 150x300mm.
 - NEW RECESSED UTILITY COVERS REFER TO UA007133-PR-1100-05.
 - EXISTING UTILITY COVER IN FOOTWAY ADJUSTED TO SUIT PROPOSED LEVELS.
 - NEW GULLY FRAME FOR DETAILS REFER TO UA007133-PR-0500-03.
 - NEW GULLY FRAME AND CATCHPIT - FOR DETAILS REFER TO UA007133-PR-0500-03.
 - PROPOSED ROAD SIGN LOCATION.
 - REINSTATE EXISTING CYCLEWAY ROUTE MARKER POST.
 - EXISTING UTILITY COVER IN CARRIAGEWAY TO SUIT PROPOSED LEVELS.
 - NEW NON ILLUMINATED IGP FOR DETAILS REFER TO DRAWING UA007133-PR-1100-05.

- NOTES**
1. FOR SURVEY LEGEND REFER TO DRG UA007133-PR-0000-01.
 2. THE CONTRACTOR IS TO MAINTAIN ACCESS TO ALL PROPERTIES AND BUSINESSES AT ALL TIMES.
 3. BEWARE OF UNDERGROUND SERVICES. THE CONTRACTOR SHALL ENSURE THAT ALL UTILITIES' APPARATUS IS PROPERLY LOCATED AND CLEARLY MARKED ON SITE.

0	INITIAL ISSUE	04/03/15
Issue	Description	Date
Status	PRELIMINARY DESIGN	
Scales	1:200 @ A1	Current Issue Signatures
		Author: R.Wardhan
Original Size	A1	Checker: C.Govern
Datum		Approver: K.Castle
Grid	© Copyright reserved	



Hyder Consulting (UK) Limited
Manning House
22 Carlisle Place
London
SW1P 1JA
Tel: +44 (0) 203 014 9000
Fax: +44 (0) 207 628 8428

Project:

**BALLARDS ROAD /
NEW ROAD
PUBLIC REALM IMPROVEMENTS**

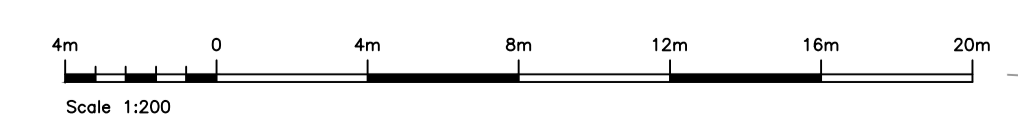
Title:

**KERBS, FOOTWAYS AND
PAVED AREAS -
GENERAL ARRANGEMENT**

Drawing No. UA007133-PR-1100-04	Rev 0
------------------------------------	----------

**KERBS, FOOTWAYS AND PAVED AREA
GENERAL ARRANGEMENT**

SCALE 1:200 @ A1



FOR CONTINUATION SEE DRAWING UA007133-PR-1100-03